
Cell Line Data Sheet for COG-N-620x

Cell Line Name: COG-N-620x

Disease: Neuroblastoma
Phase of Therapy: Post-Chemotherapy (Progressive Disease)
Treatment: ANBL0032 (Standard isotretinoin (RA) with/without Unituxin, GM-CSF, and IL-2)
Disease Stage: 4
Source of Culture: Tumor (Brain - CNS Mets)
Primary Tumor Site: Abdomen, NOS Abdominal wall, NOS Intra-abdominal site, NOS
Date Established: April 2016

MYCN Status: Non-Amplified
TH expression: Positive

Gender: Male
Age: 5.36 years
Race: NA

Strain of Mice: NSG only
Injection Type: Subcutaneous
Growth Properties: Mice get high blood sugar; 4-6 months to 1500mm³
Please see Protocols section at <https://www.cccells.org/protocols.php>

Human vs. Mouse This PDX model has been tested and confirmed over multiple passages to be above 99% human cells

STR Profile: May be obtained at <https://strdb.cccells.org/>

Notes:

Cell Line Data Sheet for COG-N-620x

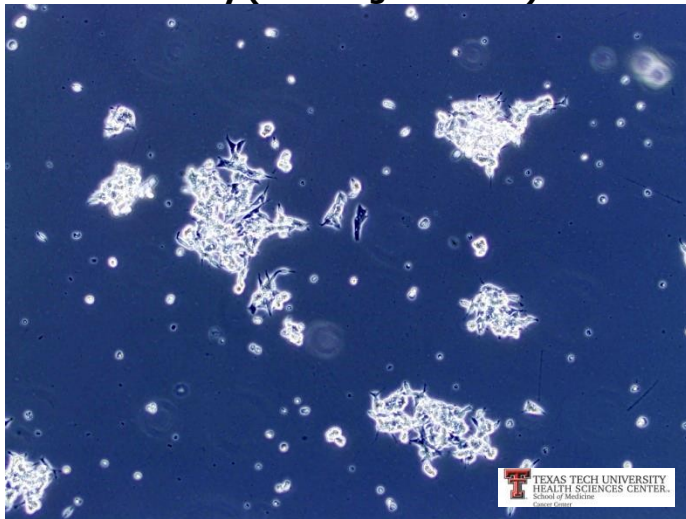
Cell Line Name: COG-N-620x

References:

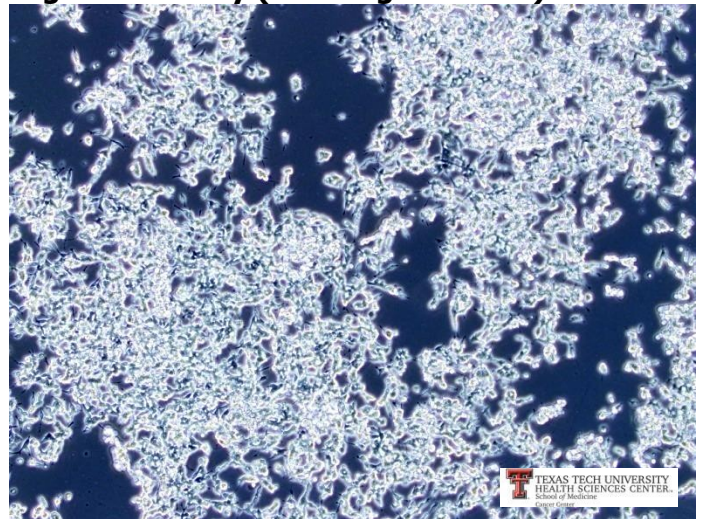
Cell Line Data Sheet for COG-N-620x

Cell Line Name: COG-N-620x

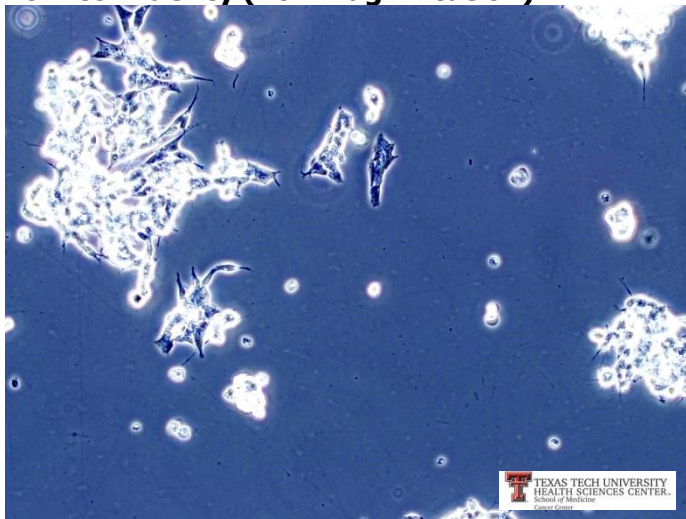
Low confluency (10x magnification)



High confluency (10x magnification)



Low confluency (20x magnification)



High confluency (20x magnification)

